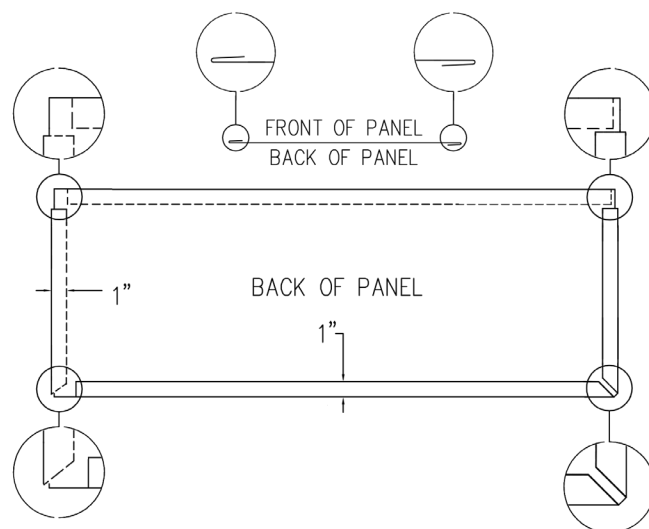
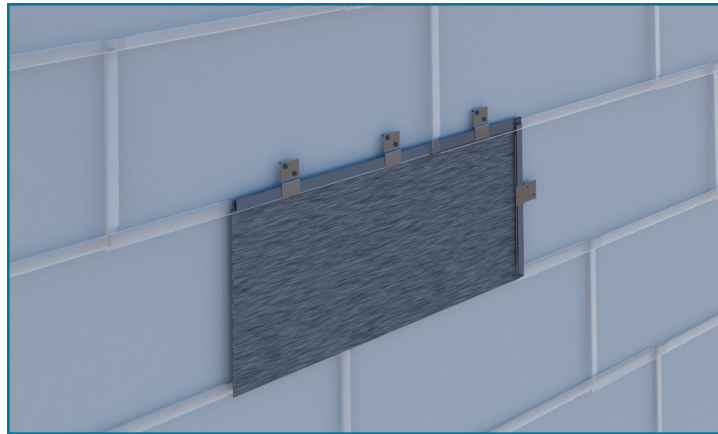




**SGH**  
concepts

## Flat Lock Metal Panel System

SGH Concepts' flat lock metal panel system consists of a flat shingle-like panel that interlocks creating a straightforward installation, and a cost effective solution. This system is often used in both exterior cladding and interior design, providing a versatile solution for a wide range of architectural projects. With the ability to fabricate flat lock panels in-house, SGH Concepts has full control of our fabrication lead times and project schedules. These panels are available in custom sizes, and can be installed in a horizontal or vertical orientation left to right or vice versa.



**sghconcepts.com**  
P 402.493.9393  
F 402.493.5934

**TF 844.255.9393**  
Omaha Office  
742 N. 109th Ct. / Omaha, NE 68154

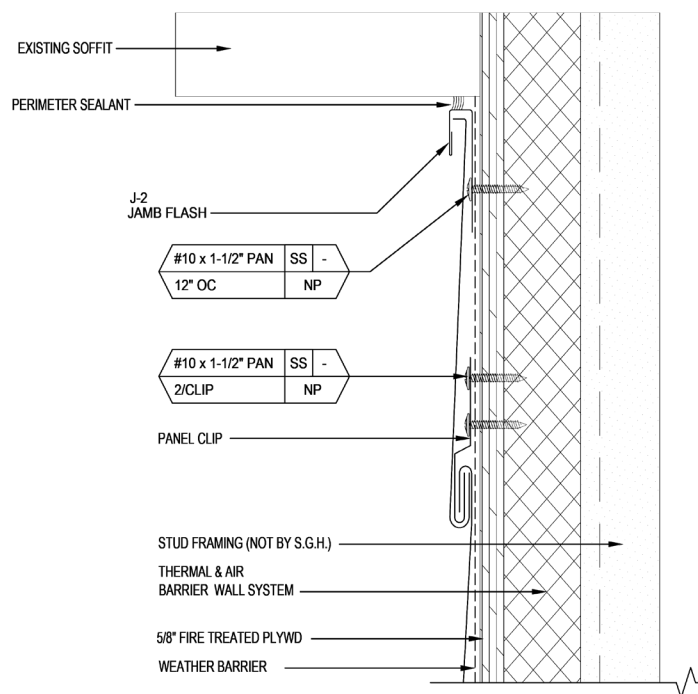
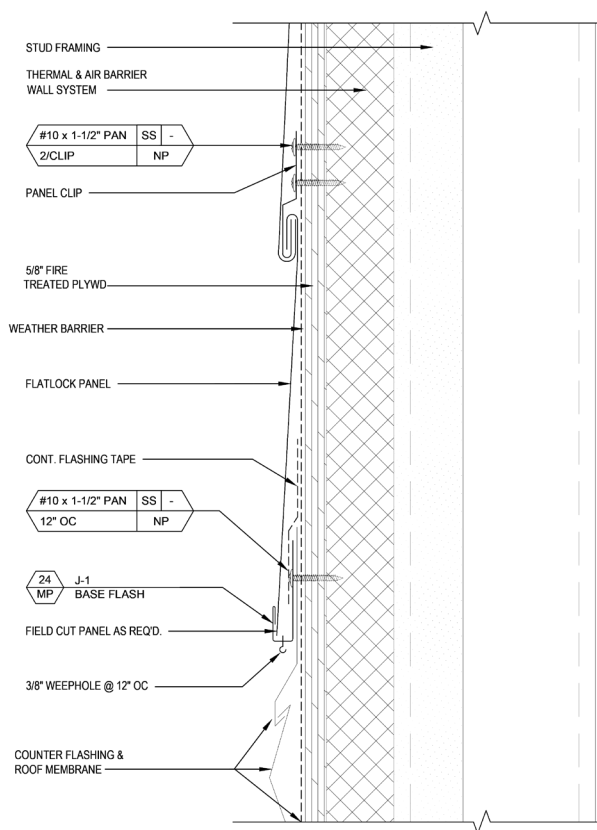
a division of SGH Redglaze Holdings, Inc.





## System Features

System	Flat lock interlocking rainscreen
Material Thickness	0.70mm, 0.80mm, 1.0mm zinc, steel, & 0.40mm aluminum
Materials	Zinc, copper, aluminum, steel, stainless steel
Standard Sizes	Horizontal or Vertical Orientation 12"x36", 12"x60", 16"x36", 16"x60" <i>*custom sizes are available</i>
Materials	Zinc, copper, aluminum, steel, stainless steel
Substrate	Weathersealed 5/8" treated plywood or other adequate substrate
Attachment	16" on center
System Weight	1.6 - 2.0 lbs/ft <sup>2</sup>
Maintenance	Minimal



*Note:* The information and product details disclosed on this document are proprietary to SGH Concepts, a division of SGH Redglaze Holdings, Inc. and, accordingly, are subject to written approval for any and all third-party usage.

- Creating individualized solutions.
- Providing smarter solutions from concept to design.
- Creating something of enduring value.
- Collaborating with you to give form to your vision.