

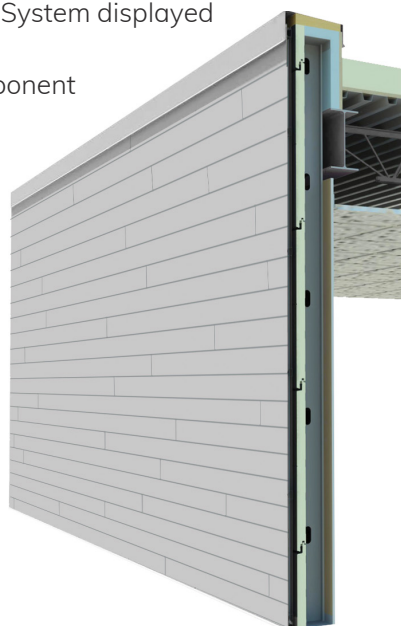


SGH
concepts

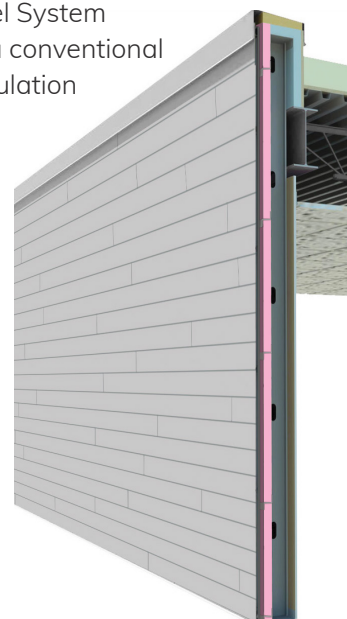
A-Plank Metal Panel System

Constructed with .100" aluminum, A-Plank is the most robust panel on the market. This panel provides more color options than other manufacturers with available finishes including standard Kynar solid colors, powder-coat, faux-woodgrain powder-coat, and anodized (black, bronze, medium bronze, and clear).

*A-Plank Panel System displayed
as a Genwall®
assembly component



*A-Plank Panel System
displayed on a conventional
horizontal insulation
system



A-Plank panel joints can either be staggered or stacked. Punched, slotted holes along the top leg allows for ease of fastening A-Plank panels to the substrate. The unique splice plate behind the panels can create either a flush or lap-siding profile. This simple design consists of only a few accessories to complete the system.

sghconcepts.com
P 402.493.9393
F 402.493.5934

TF 844.255.9393
Omaha Office
742 N. 109th Ct. / Omaha, NE 68154

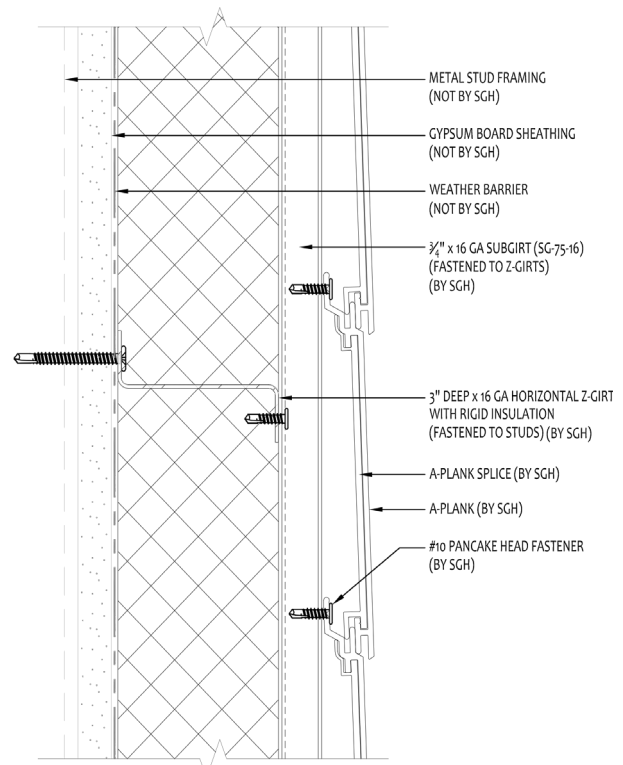
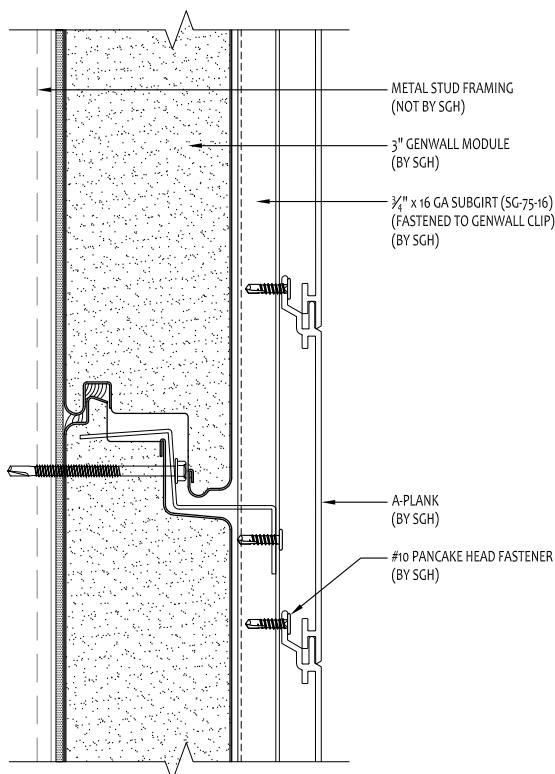
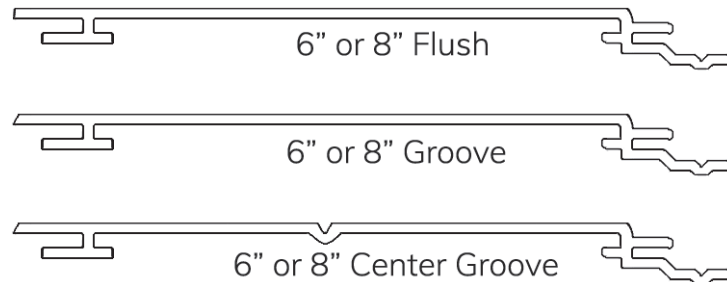
a division of SGH Redglaze Holdings, Inc.





System Features

System	Aluminum plank siding
Joint Type	Interlocking joinery, spliced ends, without sealant
System Depth	1" overall
Dimensions	3/4" deep x 12' long (custom lengths available)
Finishes	Solid Kynar, powder-coat, faux-woodgrain, anodized
Substrate	Adequate substrate for panel attachment
Maintenance	Minimal
Cost	Economical



Note: The information and product details disclosed on this document are proprietary to SGH Concepts, a division of SGH Redglaze Holdings, Inc. and, accordingly, are subject to written approval for any and all third-party usage.

- Creating individualized solutions.
- Providing smarter solutions from concept to design
- Creating something of enduring value.
- Collaborating with you to give form to your vision.