

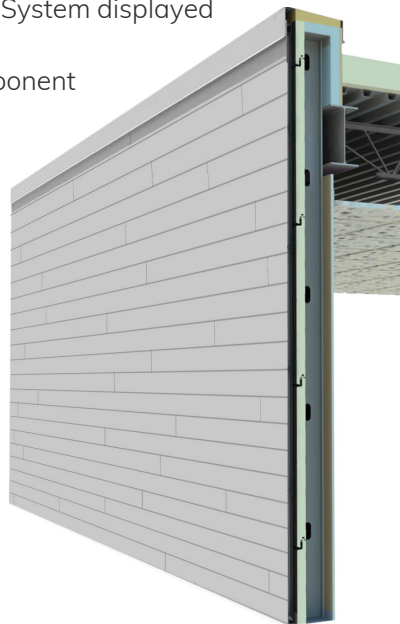


SGH
concepts

A-Plank Metal Panel System

Constructed with .100" aluminum, A-Plank is the most robust panel on the market. This panel provides more color options than other manufacturers with available finishes including standard Kynar solid colors, powder-coat, faux-woodgrain powder-coat, and anodized (black, bronze, medium bronze, and clear).

*A-Plank Panel System displayed as a Genwall® assembly component



*A-Plank Panel System displayed on a conventional horizontal insulation system



A-Plank panel joints can either be staggered or stacked. The punched, slotted holes along the top leg allows for ease of fastening A-Plank panels to the substrate. The unique splice plate behind the panels can create either a flush or lap-siding profile. This simple design consists of only a few accessories to complete the system.

sghconcepts.com
P 402.493.9393
F 402.493.5934

TF 844.255.9393
Omaha Headquarters
1111 Papillion Pkwy. / Omaha, NE 68154

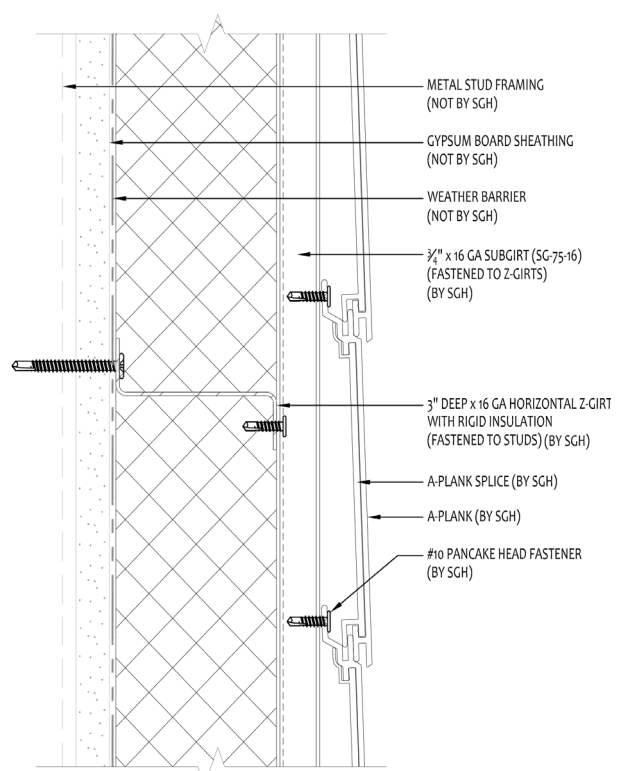
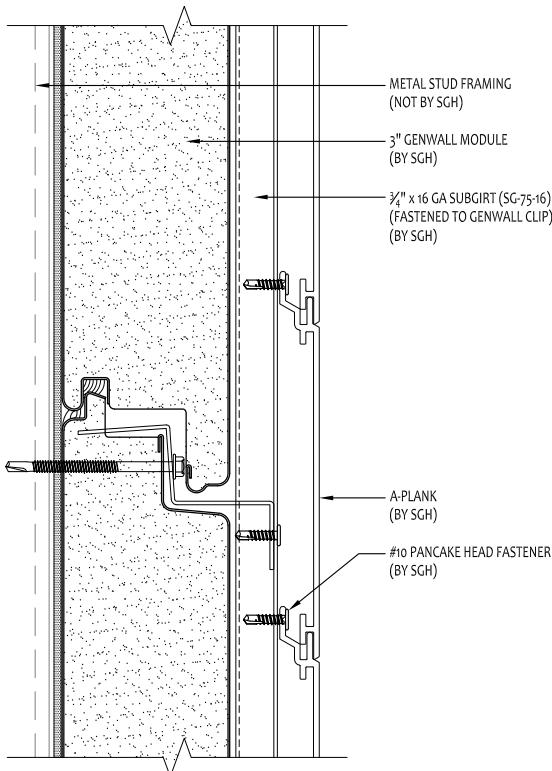
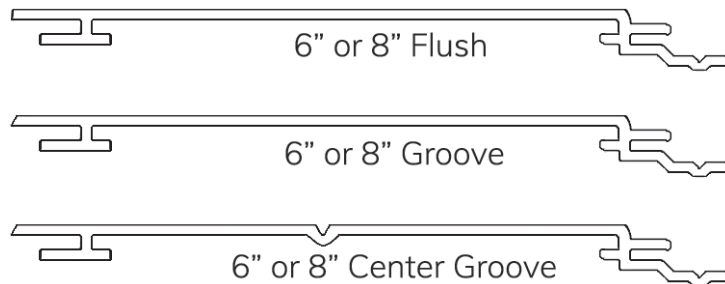
a division of SGH Redglaze Holdings, Inc.





System Features

| | |
|------------------|---|
| System | Aluminum plank siding |
| Joint Type | Interlocking joinery, spliced ends, without sealant |
| System Depth | Flush system: 1" overall Lap-siding system: 1-1/4" overall |
| Panel Dimensions | 3/4" deep x 12' long (custom lengths available) |
| Finishes | Solid Kynar, powder-coat, faux-woodgrain, anodized |
| Substrate | Adequate substrate for panel attachment |
| Maintenance | Minimal |
| Cost | Economical |



Note: The information and product details disclosed on this document are proprietary to SGH Concepts, a division of SGH Redglaze Holdings, Inc. and, accordingly, are subject to written approval for any and all third-party usage.

- Creating individualized solutions.
- Providing smarter solutions from concept to design
- Creating something of enduring value.
- Collaborating with you to give form to your vision.