



SGH
concepts

Sieccoline MCM Panel System

*Sieccoline displayed
as a Genwall®
assembly component



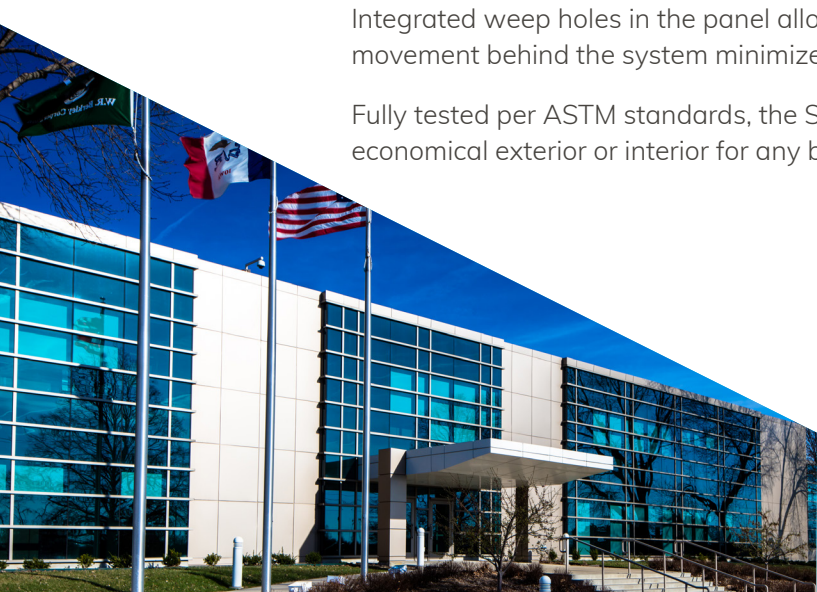
*Sieccoline displayed on
5/8" plywood with air
& water barrier



The Sieccoline system is an MCM rainscreen wall system with variable joint sizes. The ease of installation results in a clean and precise finished look using 4mm MCM (metal composite material).

The dry-joint feature means minimal, or no sealants are needed for superior protection. The system can be installed on metal/wood studs with Genwall® Enhanced Substrate System™, plywood, concrete, precast, or any other adequate substrate (with a suitable weather barrier). This system allows for versatile design, including stacked, running bond or random patterns. Integrated weep holes in the panel allow enhanced drainage of moisture, while the air movement behind the system minimizes excess vapor.

Fully tested per ASTM standards, the Sieccoline metal panel system is a sturdy, beautiful and economical exterior or interior for any building.

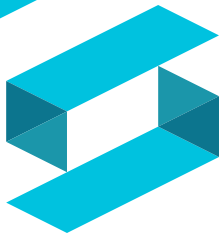


sghconcepts.com
P 402.493.9393
F 402.493.5934

TF 844.255.9393
Omaha Office
742 N. 109th Ct. / Omaha, NE 68154

a division of SGH Redglaze Holdings, Inc.



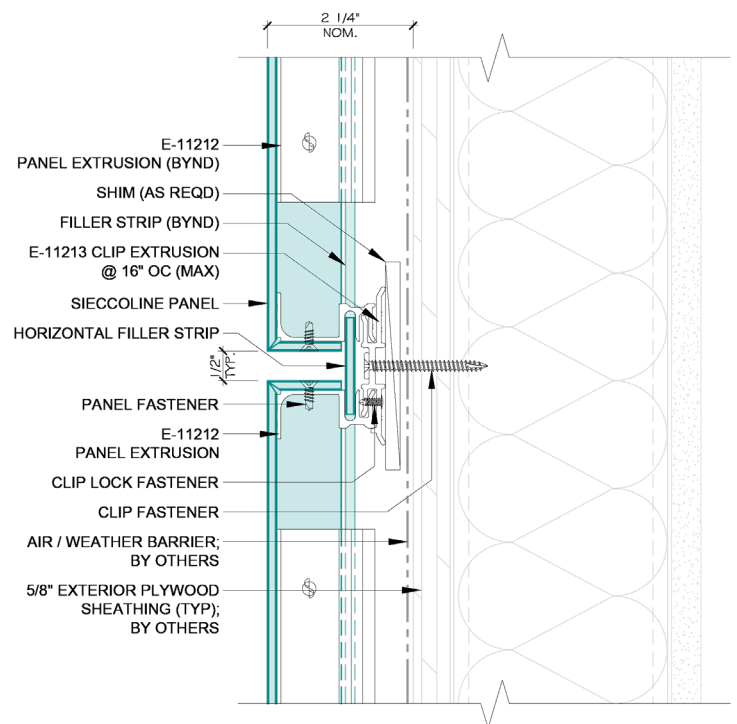
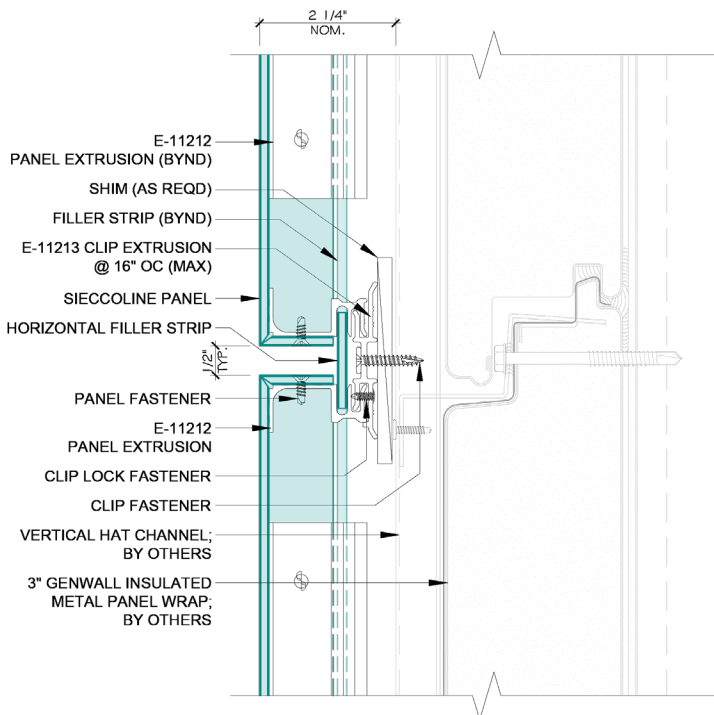


SGH concepts



System Features

System	Rear-ventilated rainscreen
Joint Type	Open/dry-joint
System Depth	2-1/4" overall
Joint Size	1/2" standard; 1/2" to 2" optional
Substrate	Adequate substrate for panel attachment
Independent Testing	ASTM E283-04, E330-02, E331-00, AAMA501.1-05
Maintenance	Minimal



*Reynobond, Alucobond, or Alpolic stock MCM is available for ACM/MCM¹ panel systems.

Note: The information and product details disclosed on this document are proprietary to SGH Concepts, a division of SGH Redglaze Holdings, Inc. and, accordingly, are subject to written approval for any and all third-party usage.

- Creating individualized solutions.
- Providing smarter solutions from concept to design
- Creating something of enduring value.
- Collaborating with you to give form to your vision.