



SGH
concepts

Architectural Product Information / Billings Territories

For more than 70 years, SGH Concepts has been providing quality products and service. Our customers know that our products are second to none and are up-to-date with the latest designs and installation techniques. We thrive on finding solutions—collaborating with architects, designers, and contractors—throughout the entire design and construction process. Our goal is simple; to create buildings of lasting, enduring beauty.

TF 888.245.4116
P 406.652.2555
F 406.652.4441

sghconcepts.com
Billings Office
1113 Central Ave. / Billings, MT 59102

SGH Concepts, A Division of SGH Redglaze Holdings, Inc.





Montana State Fund Bank / Helena, MT
Swisspearl / Kalwall / Misc.



Northwest Pipe / Billings, MT
Kalwall



Montana Tech NRRC / Butte, MT
Swisspearl / Centria



Medicine Crow Middle School / Billings, MT
Swisspearl



University of Montana Missoula College / Missoula, MT
Dri-Design



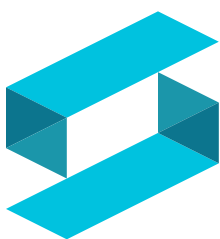
Yellowstone Hall Dorms, Montana State University (MSU) / Bozeman, MT
Dri-Design



Goodwill - Heights / Billings, MT
FunderMax



AgLand Co-Op Farm & Ranch / Wolf Point, MT
FunderMax



SGH
concepts

sghconcepts.com



Rialto Theatre / Bozeman, MT
Kalwall



Helena Readiness Center / Helena, MT
Kalwall / Solatube



CLAAS of America Training Academy / Omaha, NE
Skyfold



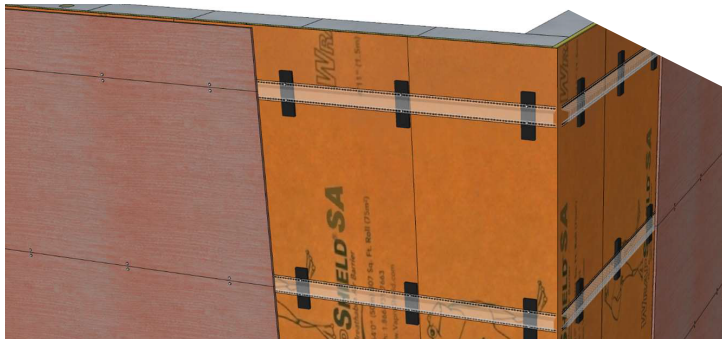
MARS of Billings / Billings, MT
Solatube



Consumer Direct Care Network / Missoula, MT
Citadel



Science Building, Rocky Mountain College / Billings, MT
Citadel



VaproShield Horizontal Hat Channel Rain Screen System with
VaproShim SA Self-Adhered



Montana Tech Student Success and Living Learning Center / Butte, MT
Genwall

**Providing smarter solutions from
concept to design while
collaborating with you to give
form to your vision.**

- Design Assistance
- Detailing Assistance
- Preliminary Budgets
- Project Estimates

- Project Management
- Engineering & Shop Drawings
- Daylighting / Skylights Services
- Installation
- Service/Maintenance

Products / Descriptions

EXTERIOR PANEL SYSTEMS	A-Plank	Solid extruded aluminum plank siding.
	Centria	Metal wall panel & roof systems.
	Citadel	Field-assembled cladding systems.
	Dizal®	UV-stable, digitally-printed, aluminum rainscreen.
	Dri-Design®	Dry-joint rainscreen; aluminum, SS copper panels.
	Fabral	Metal wall panel & roof systems.
	FunderMax®	High-pressure laminated phenolic panels provide extreme weather protection and are graffiti-resistant.
	NedZink	Innovative solutions in zinc for building envelopes.
	Swisspearl	Fiber cement, rear-ventilated façade panels, rot-resistant, noncombustible.
ACM/MCM ¹ PANELS	Revelar*	Open-joint, rear-ventilated ACM rainscreen with exposed fasteners.
	Sieccoline*	Dry-joint, rear-ventilated ACM rainscreen.
BACKUP SYSTEMS	Genwall®	Innovative stud-to-skin insulated composite backup panel system that exceeds newest IBC & NFPA codes.
	StronGirt™	Insulation composite girt system.
	VaproShield®	High-performance, vapor-permeable, water-resistive barriers (WRB) and air barrier (AB) membranes and accessories.

Products / Descriptions

DAYLIGHTING SYSTEMS	CrystaLite	Skylights, roof glazing, sunrooms, and railing systems.
	Kalwall®	High-performance translucent daylight systems for walls and roofs.
	Structures Unlimited®	Translucent skyroof and support systems.
	Solatube®	Tubular daylighting system.
SERVICES	Daylighting Maintenance & Retrofit	Inspection, reporting, weather impact reports, maintenance, repair, or replacement.
	Fabrication Services	Specialized brand elements & building envelope fabrication
DOOR/SPECIAL ACCESS	Bilco Company	Specialty access and fire protection products for floors and roofs.
	Cornell Cookson Door	Roll-up doors, security gates, steel security doors, fire-rated doors and overhead doors.
	Total Door Systems	Custom, fully-integrated door systems.
INTERIOR PRODUCTS	Airolite	Architectural, high-performance louvers, grilles and screens.
	Gordon	Metal engineered ceiling and wall systems.
	Livers Bronze	Aesthetic railing systems.
	MM Systems	Expansion joint technology.
	Skyfold	Custom vertical-folding, powerlift wall partitions.
OTHER	Custom Products	Engineered and fabricated ornamental metals and cladding.

*Reynobond, Alucobond, or Alpollic stock MCM is available for ACM/MCM¹ panel systems.

SGH Concepts is centrally located in seven cities serving ten states.

Omaha (Headquarters)
742 N. 109th Court
Omaha, NE 68154

Des Moines
3100 101st Street, Ste. A
Urbandale, IA 50322

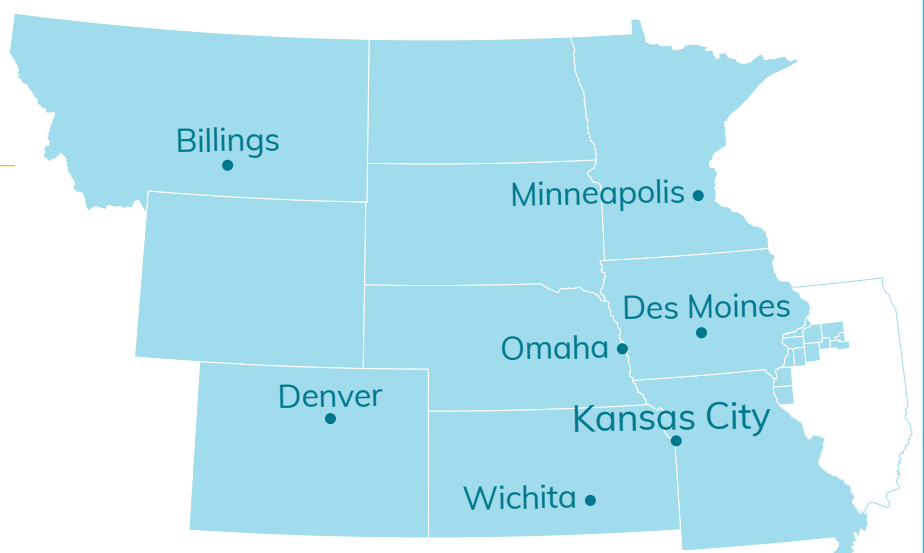
Kansas City
1800 N.W. Vivion Road
Kansas City, MO 64150

Wichita
8201 E. 34th St. Cir N, Ste 903
Wichita, KS 67226

Billings
1113 Central Avenue
Billings, MT 59102

Denver
15603 E. Fremont Drive, Ste. A
Centennial, CO 80112

Minneapolis
Bloomington, MN 55425



Front TB: Kalwall at Palisades Ranch - Red Lodge, MT / Solatube in Kum & Go - Nationwide / Dri-Design on healthcare offices - Helena, MT
Skyfold in Elkhorn Public Schools - Elkhorn, NE / Swisspearl on Montana State Fund Bank - Helena, MT / Centria, Citadel and Kalwall on Faith Chapel - Billings, MT