

**SGH**  
concepts

## Architectural Product Information / Des Moines Territories

For more than 70 years, SGH Concepts has been providing quality products and service. Our customers know that our products are second to none and are up-to-date with the latest designs and installation techniques. We thrive on finding solutions—collaborating with architects, designers, and contractors—throughout the entire design and construction process. Our goal is simple; to create buildings of lasting, enduring beauty.

**sghconcepts.com**  
P 515.226.1155  
F 402.493.5934

**TF 844.255.9393**  
Des Moines Office  
3100 101st Street, Ste. A / Urbandale, IA 50322

SGH Concepts, A Division of SGH Redglaze Holdings, Inc.







Animal Rescue League of Iowa / Ankeny, IA  
Centria



Polk County Justice Center / Des Moines, IA  
Dri-Design (VM Zinc) / Genwall



Montana Tech NRRC / Helena, MT  
Swisspearl / Centria



VGM Group / Waterloo, IA  
Dri-Design



Veridian Credit Union / Council Bluffs, IA (4 Omaha-metro locations)  
Fundermax, Genwall, Sieccoline (ACM)



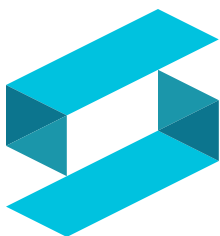
Central Bank / Springfield, MO  
Sentech



Cedar Valley Sportsplex / Waterloo, IA  
Centria



Iowa Culinary Institute / Ankeny, IA  
Dri-Design



**SGH**  
concepts

[sghconcepts.com](http://sghconcepts.com)

Providing smarter solutions from  
concept to design while  
collaborating with you to give  
form to your vision.





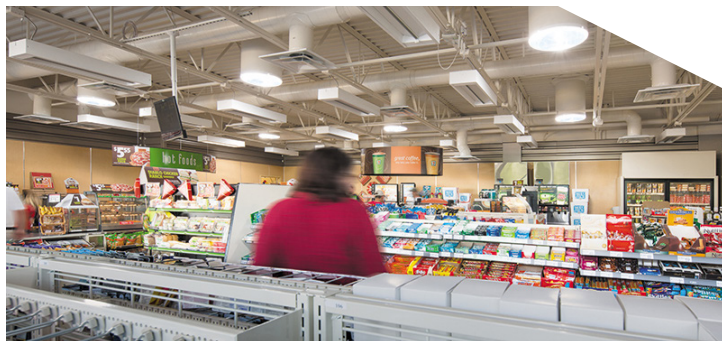
Ames Airport Executive Terminal / Ames, IA  
Dri-Design / Sieccoline (ACM)



Palisades Ranch / Red Lodge, MT  
Kalwall



Miron Construction Offices / Cedar Rapids, IA  
Kalwall



Kum & Go / Nationwide (100+ Locations)  
Solatube

## Products / Descriptions

|                                |                                    |  |
|--------------------------------|------------------------------------|--|
| EXTERIOR<br>PANEL SYSTEMS      | A-Plank                            | Solid extruded aluminum plank siding.  |
|                                | Centria                            | Metal wall panel & roof systems.   |
|                                | Dizal®                             | UV-stable, digitally-printed, aluminum rainscreen.   |
|                                | Dri-Design®                        | Dry-joint rainscreen; aluminum, SS copper panels.  |
|                                | Fundermax®                         | High-pressure laminated phenolic panels provide extremely weather protection and are graffiti-resistant. |
|                                | Swisspearl                         | Fiber-cement, rear-ventilated façade panels, rot-resistant, noncombustible.                              |
|                                | NedZink®                           | Innovative solutions in zinc for building envelopes.   |
| ACM/MCM <sup>1</sup><br>PANELS | Revelar*                           | Open-joint, rear-ventilated ACM rainscreen with exposed fasteners.                                       |
|                                | Sieccoline*                        | Dry-joint, rear-ventilated ACM rainscreen.   |
| BACKUP<br>SYSTEMS              | Genwall®                           | Innovative stud-to-skin insulated composite backup panel system that exceeds newest IBC & NFPA codes.    |
|                                | StronGirt™                         | Insulation composite girt system.  |
| DAYLIGHTING<br>SYSTEMS         | Kalwall®                           | High-performance translucent daylight systems for walls and roofs.                                       |
|                                | Structures Unlimited®              | Translucent skyroof and support systems.   |
|                                | Solatube®                          | Tubular daylighting system.  |
| SERVICES                       | Daylighting Maintenance & Retrofit | Inspections, reporting, weather impact report, maintenance, repair, & replacement.                       |
|                                | Fabrication Services               | Specialized brand elements & building envelope fabrication.  |
| INTERIOR<br>PRODUCTS           | Modernfold™                        | Operable walls and accordion partitions.   |
|                                | Skyfold                            | Custom vertical folding, powerlift partitions.   |
|                                | Smoke Guard®                       | Smoke and fire rated curtains.   |
| OTHER                          | Sentech Architectural Systems      | Structural glass systems.  |
|                                | Custom Products                    | Engineered and fabricated ornamental metals and cladding.  |

<sup>1</sup>Reynobond, Alucobond, or Alpollic stock MCM is available for ACM/MCM<sup>1</sup> panel systems.

- Design Assistance
- Detailing Assistance
- Preliminary Budgets
- Project Estimates
- Project Management
- Engineering & Shop Drawings
- Daylighting / Skylights Services
- Installation
- Service/Maintenance





Waukee Elementary School #8 / Waukee, IA  
Solatube



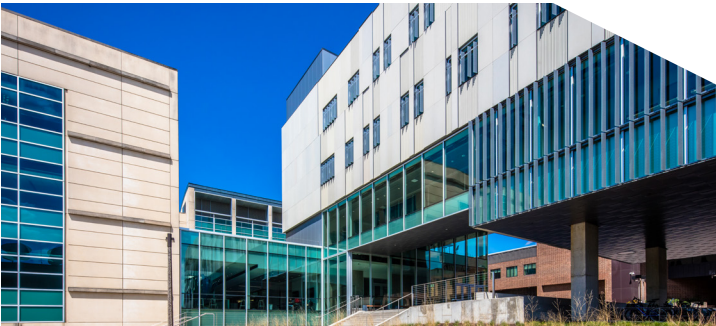
The Fletcher Bar & Grill / Ankeny, IA  
Centria / Kalwall



Montana State Fund Bank / Helena, MT  
Swisspearl / Kalwall / Misc.



Jack Trice Football Stadium South, Iowa State University / Ames, IA  
Centria / Sieccoline



Seamans Center University of Iowa / Iowa City, IA  
Flat Lock / Misc.



CLAAS of America Training Academy / Omaha, NE  
Skyfold

**SGH Concepts** is centrally located in seven cities serving ten states.

**Omaha** (Headquarters)  
742 N. 109th Court  
Omaha, NE 68154

**Des Moines**  
3100 101st Street, Ste. A  
Urbandale, IA 50322

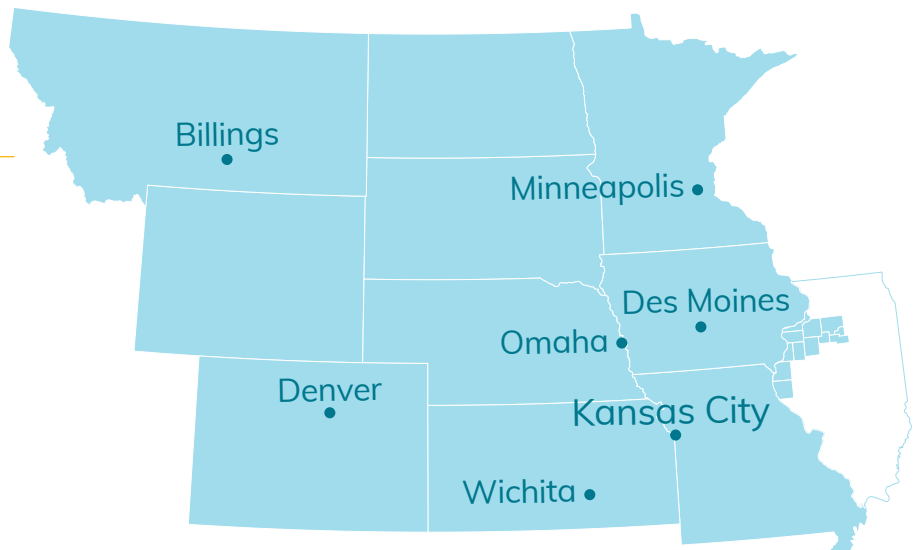
**Kansas City**  
1800 N.W. Vivion Road  
Kansas City, MO 64150

**Wichita**  
8201 E. 34th St. Cir N, Ste 903  
Wichita, KS 67226

**Billings**  
1113 Central Avenue  
Billings, MT 59102

**Denver**  
15603 E. Fremont Drive, Ste. A  
Centennial, CO 80112

**Minneapolis**  
Bloomington, MN 55425



Front TB:Kalwall & Centria on Waukee High School / Skyfold in Elkhorn Public Schools / Centria & Sieccoline on Jack Trice Football Stadium South, Iowa State University  
Solatube in Kum & Go / Centria on Animal Rescue League of Iowa / Dri-Design on Collier-Scripps Hall Ray Center at Drake University