



SGH
concepts

Architectural Product Information / Denver Territories

For more than 70 years, SGH Concepts has been providing quality products and service. Our customers know that our products are second to none and are up-to-date with the latest designs and installation techniques. We thrive on finding solutions—collaborating with architects, designers, and contractors—throughout the entire design and construction process. Our goal is simple; to create buildings of lasting, enduring beauty.

sghconcepts.com
P 720.370.9220
F 402.493.5934

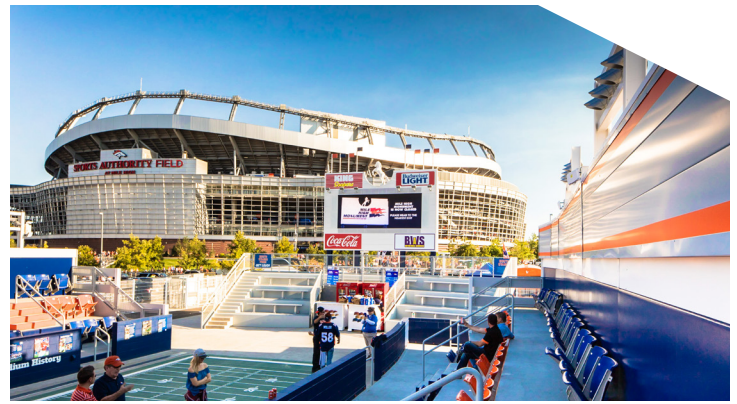
TF 844.255.9393
Denver Office
15603 E. Fremont Drive, Ste. A, Centennial, CO 80112

SGH Concepts, A Division of SGH Redglaze Holdings, Inc.





Target / Colorado Springs, CO
Centria



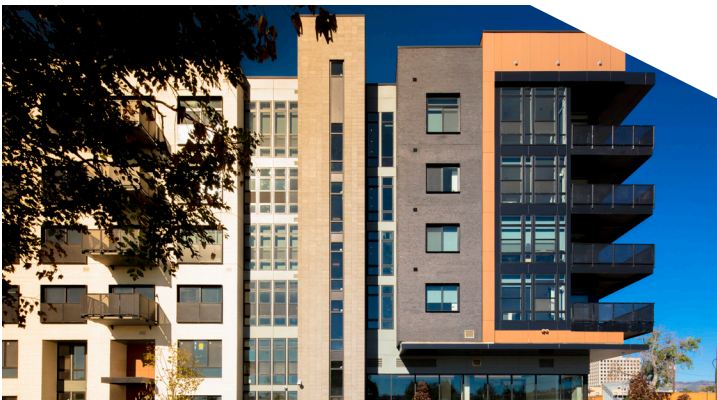
Mini Mile High Broncos Stadium / Denver, CO
Centria



Sterling Ranch Civic Center / Littleton, CO
Centria / Millennium / Prodema



AT&T / Lakewood, CO
Sieccoline ACM / High-density fiber cement board



333 Eco Apartments / Colorado Springs, CO
Revelar ACM



Kaiser Permanente Aurora Centrepont Medical Offices Addition
Aurora, CO / Centria



Montana State Fund Bank / Helena, MT
High-density fiber cement board



AC Hotel by Marriott East Village / Des Moines, IA
Dri-Design



Ginger & Baker / Fort Collins, CO
Centria



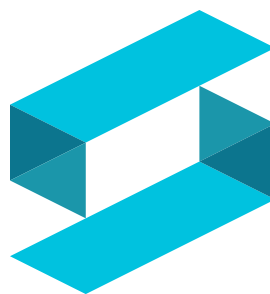
Neighbors Emergency Room / Pueblo, CO
Sieccoline ACM



UCHealth Greeley Hospital / Greeley, CO
Centria / Sieccoline ACM



University of Montana Missoula College / Missoula, MT
Dri-Design



SGH concepts

sghconcepts.com

Products / Descriptions

EXTERIOR PANEL SYSTEMS	A-Plank	Solid extruded aluminum plank siding.
	Centria	Metal wall panel & roof systems
	Dri-Design®	Dry-joint rainscreen; aluminum, SS copper panels.
	NedZink®	Innovative solutions in zinc for building envelopes.
	Revelar*	Open-joint, rear-ventilated ACM rainscreen with exposed fasteners.
	Sieccoline*	Dry-joint, rear-ventilated ACM rainscreen.
BACKUP SYSTEMS	Genwall®	Innovative stud-to-skin insulated composite backup panel system that exceeds newest IBC & NFPA codes
	StronGirt	Insulation composite girt system.
OTHER SERVICES	Fabrication Services	Specialized brand elements & building envelope fabrication
	Custom Products	Engineered and fabricated ornamental metals and cladding.

*Reynobond, Alucobond, or Alpollic stock MCM is available for ACM/MCM¹ panel systems.

Providing smarter solutions from concept to design while collaborating with you to give form to your vision.

- Design Assistance
- Detailing Assistance
- Preliminary Budgets
- Project Estimates
- Engineering and Shop Drawings
- Project Management
- Daylighting / Skylighting Services
- Installation
- Service/Maintenance

SGH Concepts / Projects Around the Region



Colorado School of Mines / Golden, CO
Centria



Ball Aerospace Technology Center / Denver, CO
Centria / Sieccoline ACM



ONE Denver Tech Center / Denver, CO
J-wall / Centria



Vaisala Office Building / Louisville, CO
Fundermax / Sieccoline ACM



Omaha Henry Doorly Zoo & Aquarium / Omaha, NE
Dri-Design

SGH Concepts is centrally located in seven cities serving ten states.

Omaha (Headquarters)
742 N. 109th Court
Omaha, NE 68154

Des Moines
3100 101st Street, Ste. A
Urbandale, IA 50322

Kansas City
1800 N.W. Vivion Road
Kansas City, MO 64150

Wichita
8201 E. 34th St. Cir N, Ste 903
Wichita, KS 67226

Billings
1113 Central Avenue
Billings, MT 59102

Denver
15603 E. Fremont Drive, Ste. A
Centennial, CO 80112

Minneapolis
Bloomington, MN 55425

